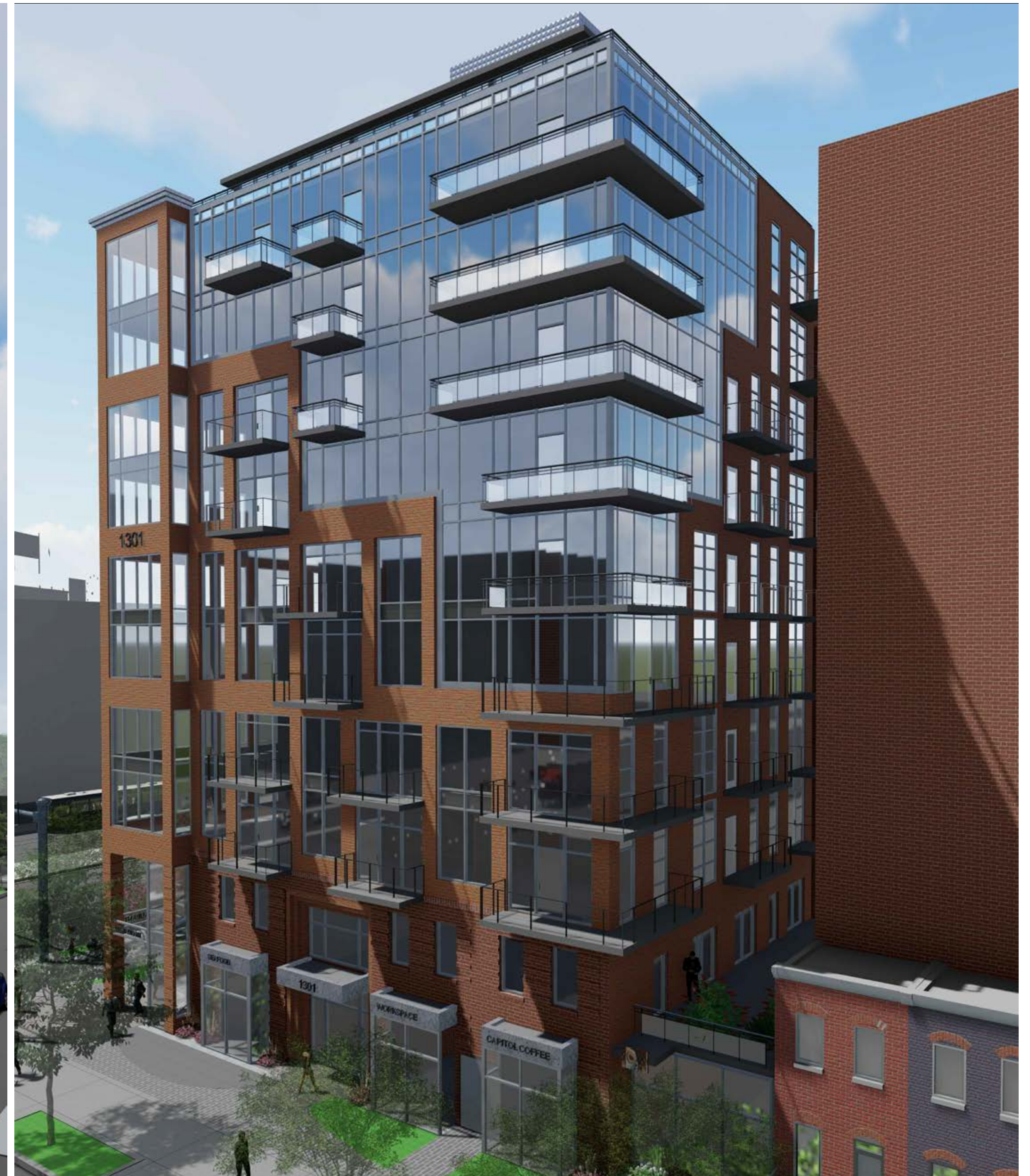


# 1301 SOUTH CAPITOL STREET PROJECT



RICH MARKUS  
ARCHITECTS  
2601 P STREET NW, 2ND FLR  
WASHINGTON DC 20007  
202.333.2877 V

SOUTH CAPITOL  
STREET SW,  
WASHINGTON D.C.

COVER PAGE

NO.	REVISIONS

NTS

09.02.2022

A000

ZONING COMMISSION  
DRAWING NUMBER

# SOUTH CAPITOL STREET, SW WASHINGTON, DC

LOT 65,66,827,829 & 830 SQUARE 0653

ZC DESIGN SET 09/19/2022

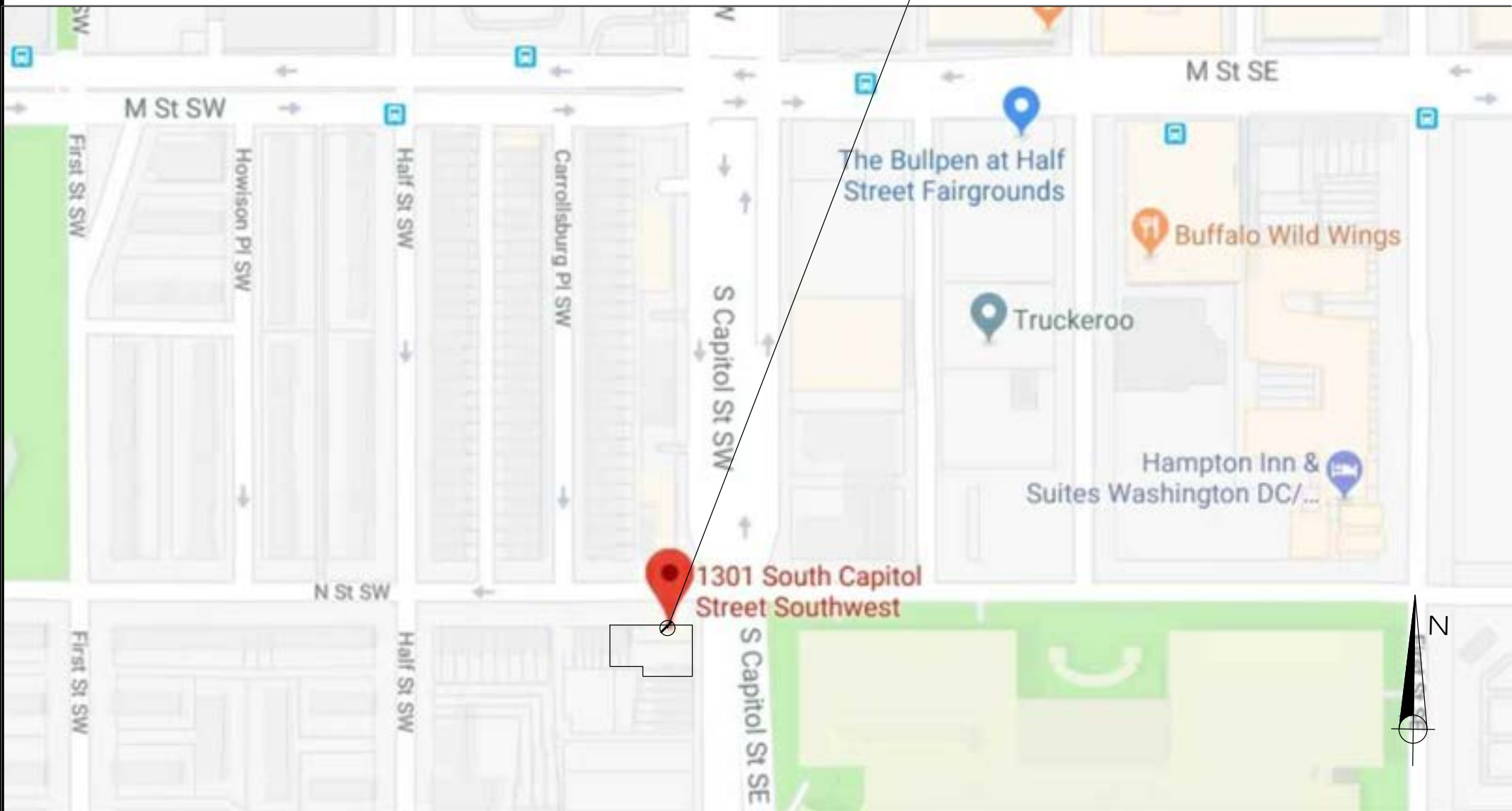
SCOPE OF WORK  
RAZE EXISTING STRUCTURES AND CONSTRUCT NEW MIXED USE BUILDING CONSISTING OF RESIDENTIAL, OFFICE AND RETAIL SPACE (CELLAR + 10 FLOORS + PENTHOUSE)

DRAWING INDEX

A000 COVER PAGE	A211 PROPOSED PENTHOUSE PLAN
A001 ZONING ANALYSIS & LOCATION	A212 PROPOSED ROOF PLAN
A002 EXISTING SURROUNDING PHOTO	A213 GAR SCORE-SHEET
A003 LOCAL BRICK PATTERN & COLOR	A300- A305 PROPOSED ELEVATIONS
A004 EASEMENT & SURROUNDING PLATS	A400 PROPOSED SECTION
A100 PROPOSED & EXISTING SITE PLAN	A401 BUILDING MATERIAL
A200 PROPOSED BASEMENT	A500-A509 PROPOSED 3D VIEWS
A201-210 PROPOSED FLOOR PLANS	A510-A512 SHADOW STUDY

RICH MARKUS  
ARCHITECTS  
2601 P STREET NW, 2ND FLR  
WASHINGTON DC 20007  
202.333.2877 V

SITE LOCATION 1301 SOUTH CAPITOL ST SW



GENERAL NOTES / ZONING CODE ANALYSIS 1301 SOUTH CAPITOL ASSOCIATES, LLC, WASHINGTON, DC  
ZONING DISTRICT CG-2 TOTAL LOT AREA 7131 SF

USE GROUP MEDIUM-DENSITY MIXED USE WITH FOCUS ON RESIDENTIAL TOTAL LOT WIDTH 69  
LOT 65, 66, 827, 829, 830  
SQUARE 0653

REQUIREMENT	EXISTING	ALLOWABLE / REQUIRED	PROPOSED
LOT OCCUPANCY	N/A	90% (max with IZ)	84% (6013 SF)
F.A.R	N/A	7.2 (INCLUDING IZ) 51,343 SF	7.195 51,313 SF
HEIGHT	N/A	90ft with IZ bonus 110ft	108.5 ft + PENTHOUSE
PENTHOUSE	N/A	20ft/ 1 STORY+MEZZ 0.4 FAR (2852 SF)	10 ft 0.39 FAR (2781 SF)
SIDEYARD WIDTH	N/A	NO REQUIREMENT	0'-0" (NO CHANGE)
REAR YARD SETBACK	N/A	15ft MIN	Ground floor-Zero feet Upper floors- 15ft., except for balconies-11ft.
FRONT YARD	N/A	15 ft MIN ON SOUTH CAPITOL ST. SW.	15 ft MIN
CLOSED COURT	N/A	Width- 4in./ft. of height =36.2ft.* Area- (width^2)*2= 2,616 sq.ft.*	Ground floor-3ft by 45sf Upper floors- 15ft by 210sf.
PARKING COMMERCIAL	N/A	N/A	NOT PROVIDED
PARKING RESIDENTIAL	N/A	N/A	
BIKE PARKING	N/A	18 LONG TERM AND 4 SHORT TERM	24 LONG TERM AND 4 SHORT TERM
DWELLING UNITS	3 RESIDENTIAL AND 2 COMMERCIAL	N/A	49 RESIDENTIAL UNITS + 3 COMMERCIAL SPACE AND OFFICE FLOOR
AFFORDABLE UNITS	N/A	-	THREE - TWO BEDROOM UNITS (303, 405, & 502) AND THREE-ONE BEDROOM UNITS (604, 701 & 806). TOTAL OF SIX UNITS, DISPERSED IN DIFFERENT FLOORS, STARTING 3RD FLOOR TO 8TH.

NOTE: ALL FIXTURE & FURNITURE IN THE IZ UNITES ARE TO BE SAME AS NON-IZ UNITES.

FLOOR AREA	1ST FLOOR AREA= 6013 SF *COMMERCIAL 1= 1398 SF *COMMERCIAL 2= 1580 SF *COMMERCIAL 2= 975 SF	2ND FLOOR AREA= 4947 SF *OFFICE FLOOR= 4245 SF 3RD-10TH FLOOR (Residential) = 5044 SFx8	PENTHOUSE AREA= 2775 SF PH-RESIDENTIAL UNIT= 795 SF COMMON AREA= 1347 SF
TOTAL COMMERCIAL + OFFICE AREA=	10,960SF	TOTAL RESIDENTIAL AREA =	40,352 SF
		GRAND TOTAL AREA = 51,313 SF	



THE SITE

SOUTH CAPITOL STREET SW,  
WASHINGTON D.C.

ZONING ANALYSIS  
LOCATION & SITE  
CONDITIONS

REVISIONS
-----------

N.T.S

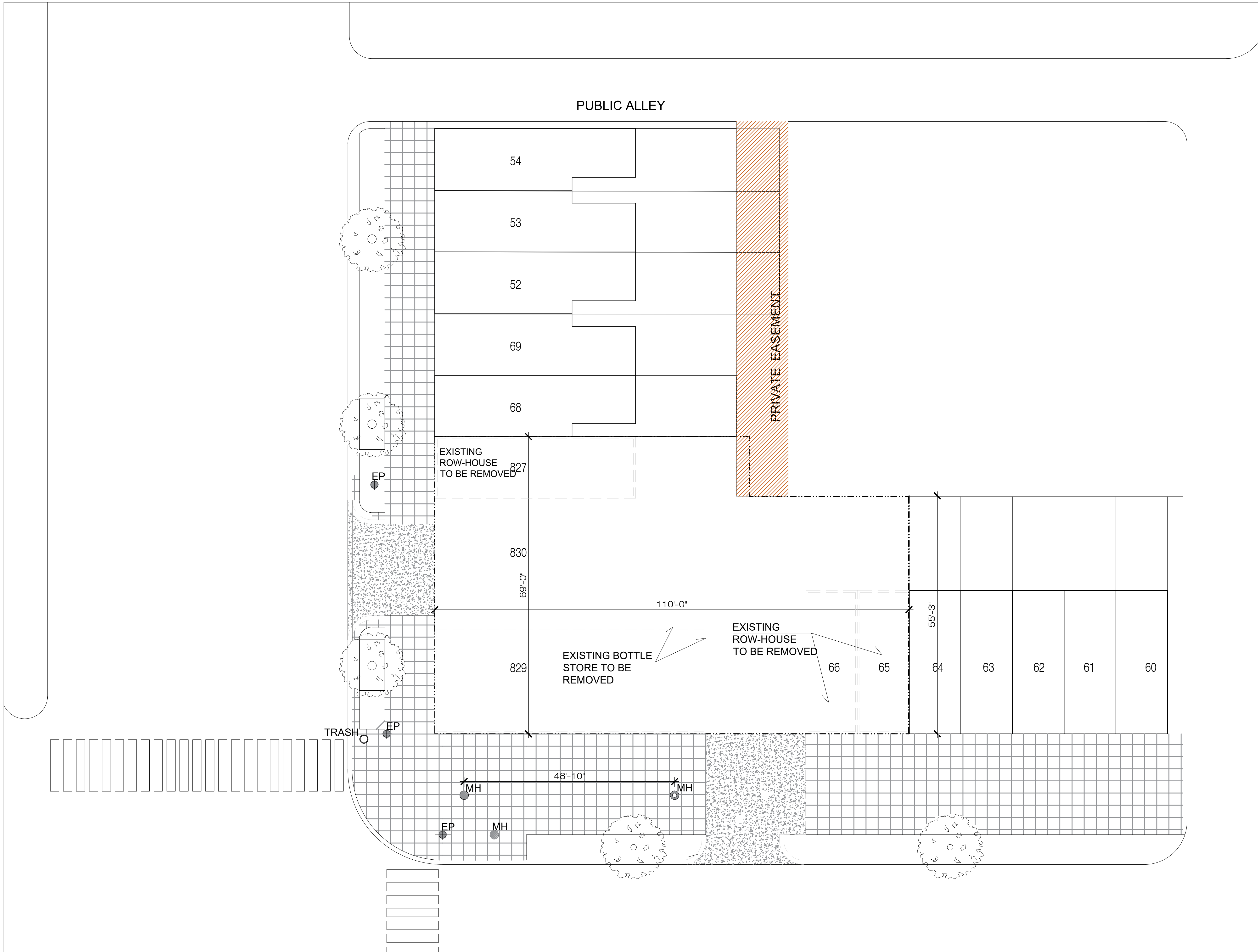
09.19.2022

A001

DRAWING NUMBER





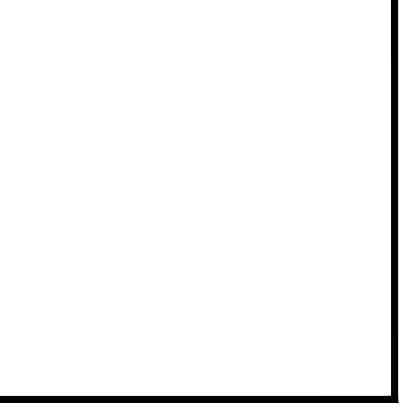


RICH MARKUS  
ARCHITECTS  
2601 P STREET NW, 2ND FLR  
WASHINGTON DC 20007  
202.333.2877 V

SOUTH CAPITOL  
STREET SW,  
WASHINGTON D.C.

EXISTING CONDITION,  
EASEMENT & DEMO

NO.	REVISIONS

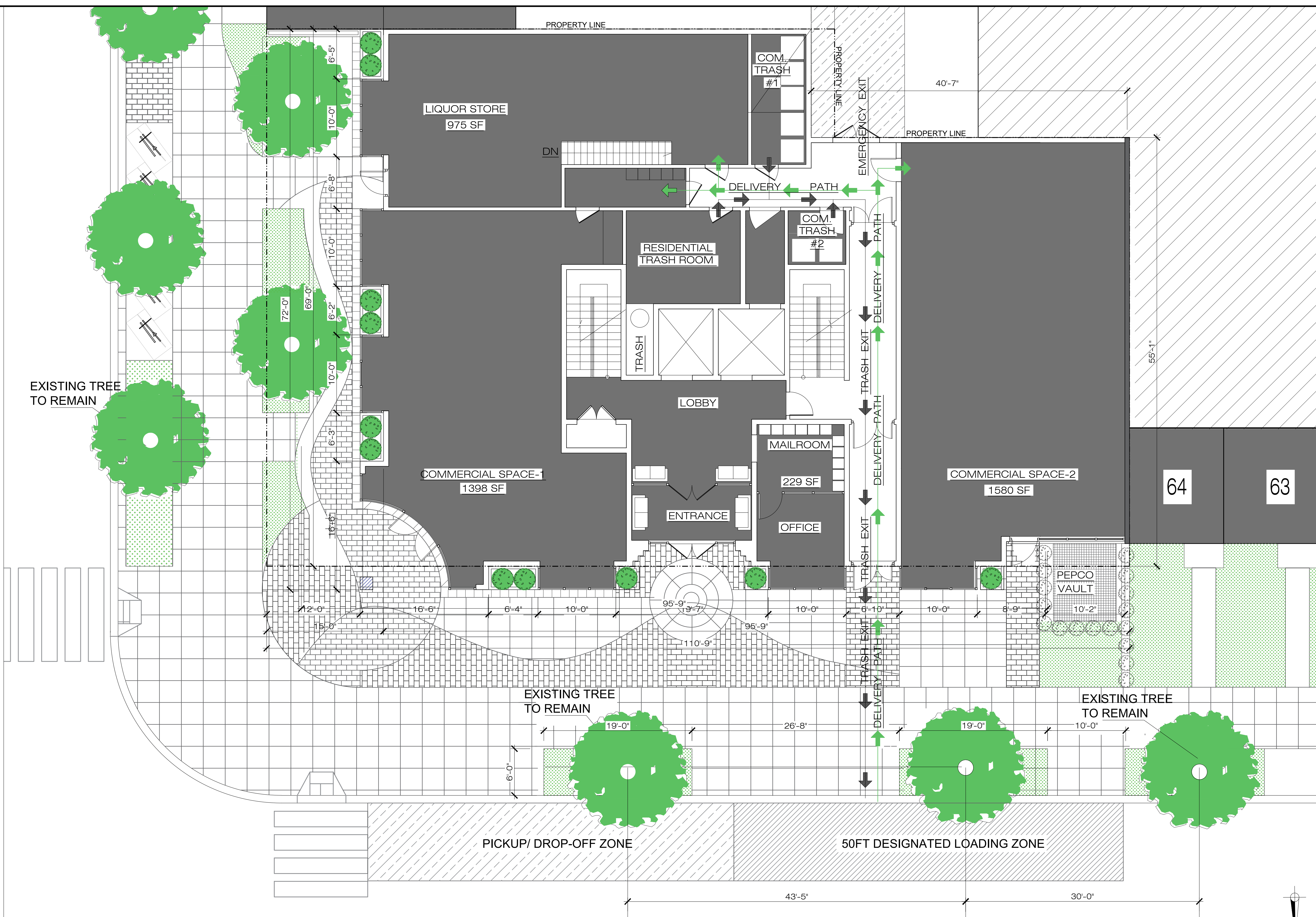


3/32" = 1'-0" SCALE

07.18.2022 ISSUE

A004 DRAWING NUMBER

EXISTING CONDITION, EASEMENT AND DEMO



RICH MARKUS  
ARCHITECTS  
2601 P STREET NW, 2ND FLR  
WASHINGTON DC 20007  
202.333.2877 V

SOUTH CAPITOL  
STREET SW,  
WASHINGTON D.C.

DELIVERY PATH &  
TRASH EXIT

NO.	DESCRIPTION

3/16" = 1'-0" SCALE

09.19.2022 ISSUE

A005 DRAWING NUMBER

EXISTING CONDITION, EASEMENT AND DEMO

NATIONALS PARK BASEBALL STADIUM

SOUTH CAPITOL STREET, SW

PUBLIC ALLEY

PRIVATE ALLEY EASEMENT

1319

N STREET, SW

# PROPOSED SITE PLAN



RICH MARKUS  
ARCHITECTS

2601 P STREET NW, 2ND FLR  
WASHINGTON DC 20007  
202.333.2877 V

SOUTH CAPITOL  
STREET SW,  
WASHINGTON D.C.

PROPOSED  
SITE PLAN

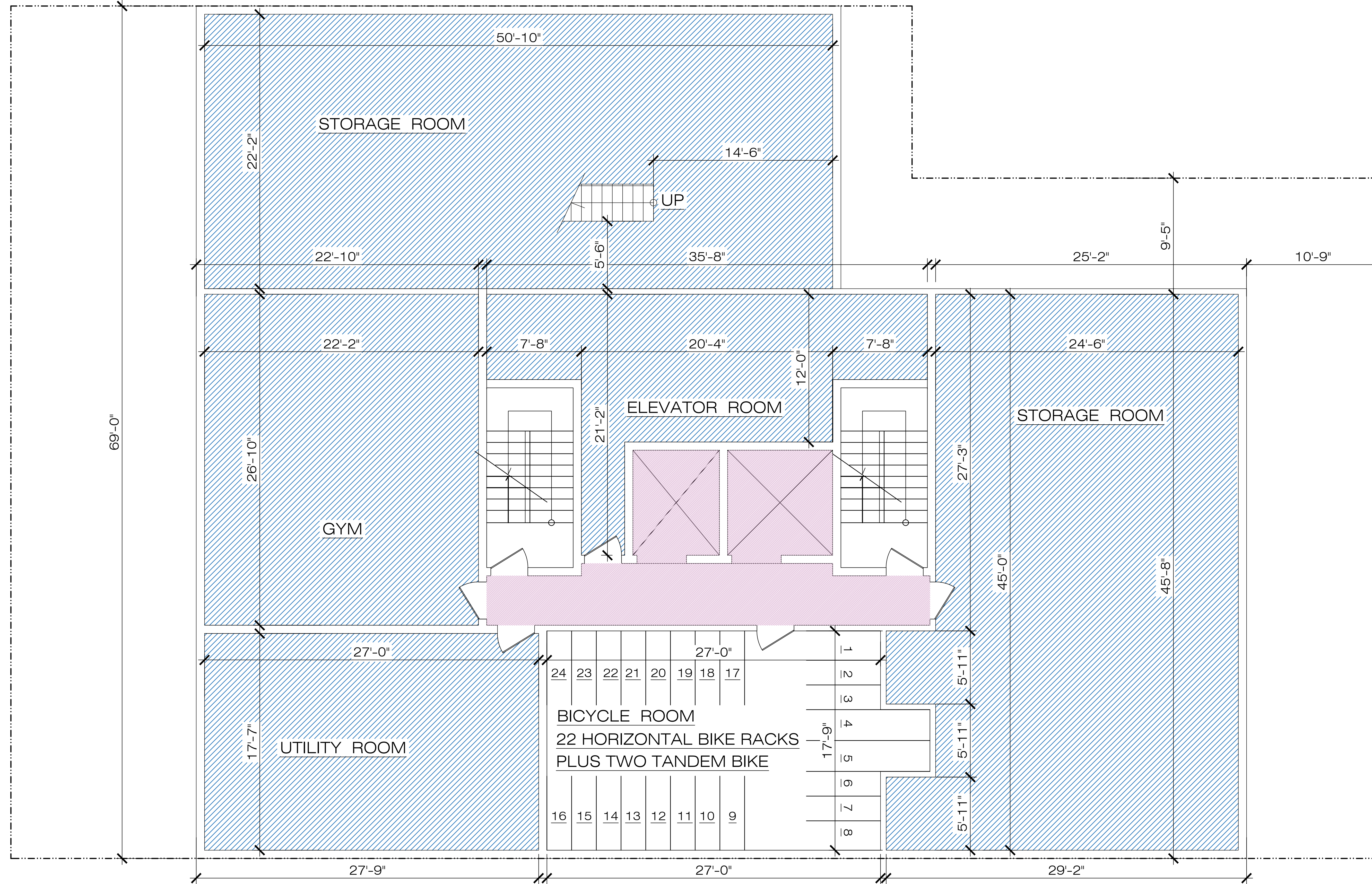
NO.	DESCRIPTION	DATE

1/16" = 1'-0" SCALE

09.19.2022 ISSUE

A100 DRAWING NUMBER

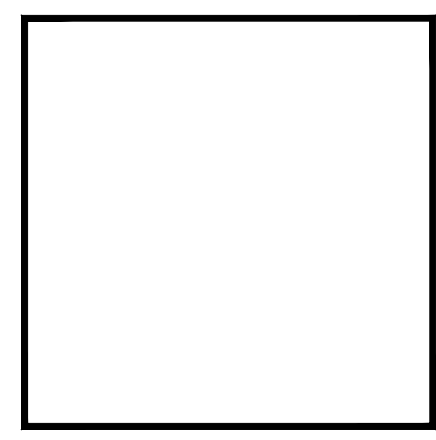
PROPOSED  
BASEMENT



RICH MARKUS  
ARCHITECTS  
2601 P STREET NW, 2ND FLR  
WASHINGTON DC 20007  
202.333.2877 V

1301 S. CAPITOL ST., SW  
WASHINGTON D.C.

PROPOSED  
BASEMENT PLAN



1/4" = 1'-0"  
SCALE

08.20.2022  
ISSUE

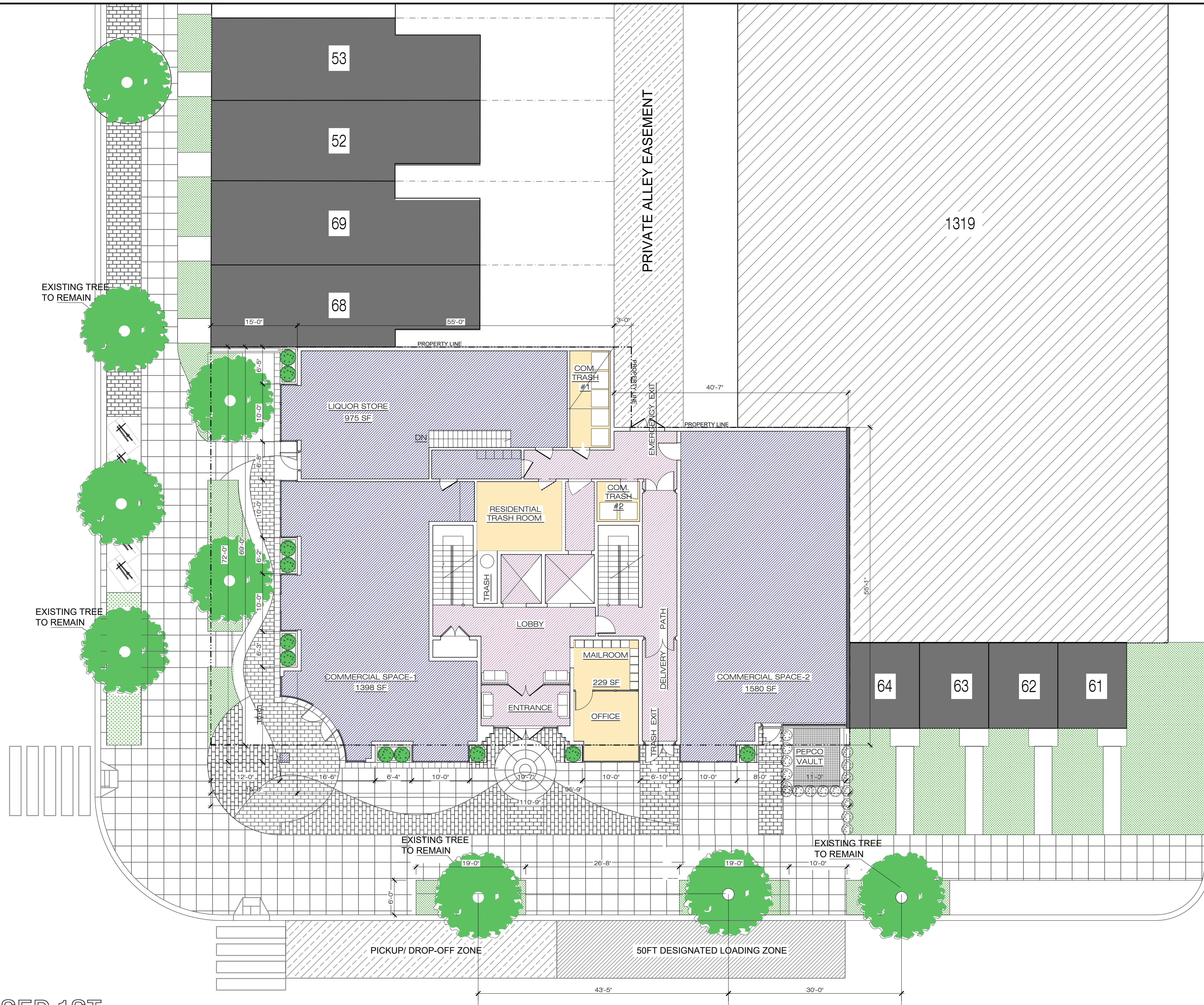
A200

DRAWING NUMBER

FILE NAME: -.dwg



SOUTH CAPITOL STREET, SW



PROPOSED 1ST FLOOR PLAN

N STREET, SW

RICH MARKUS ARCHITECTS  
 2601 P STREET NW, 2ND FLR  
 WASHINGTON DC 20007  
 202.333.2877 V

SOUTH CAPITOL STREET SW,  
 WASHINGTON D.C.

PROPOSED 1ST FLOOR PLAN

NO.	REVISIONS

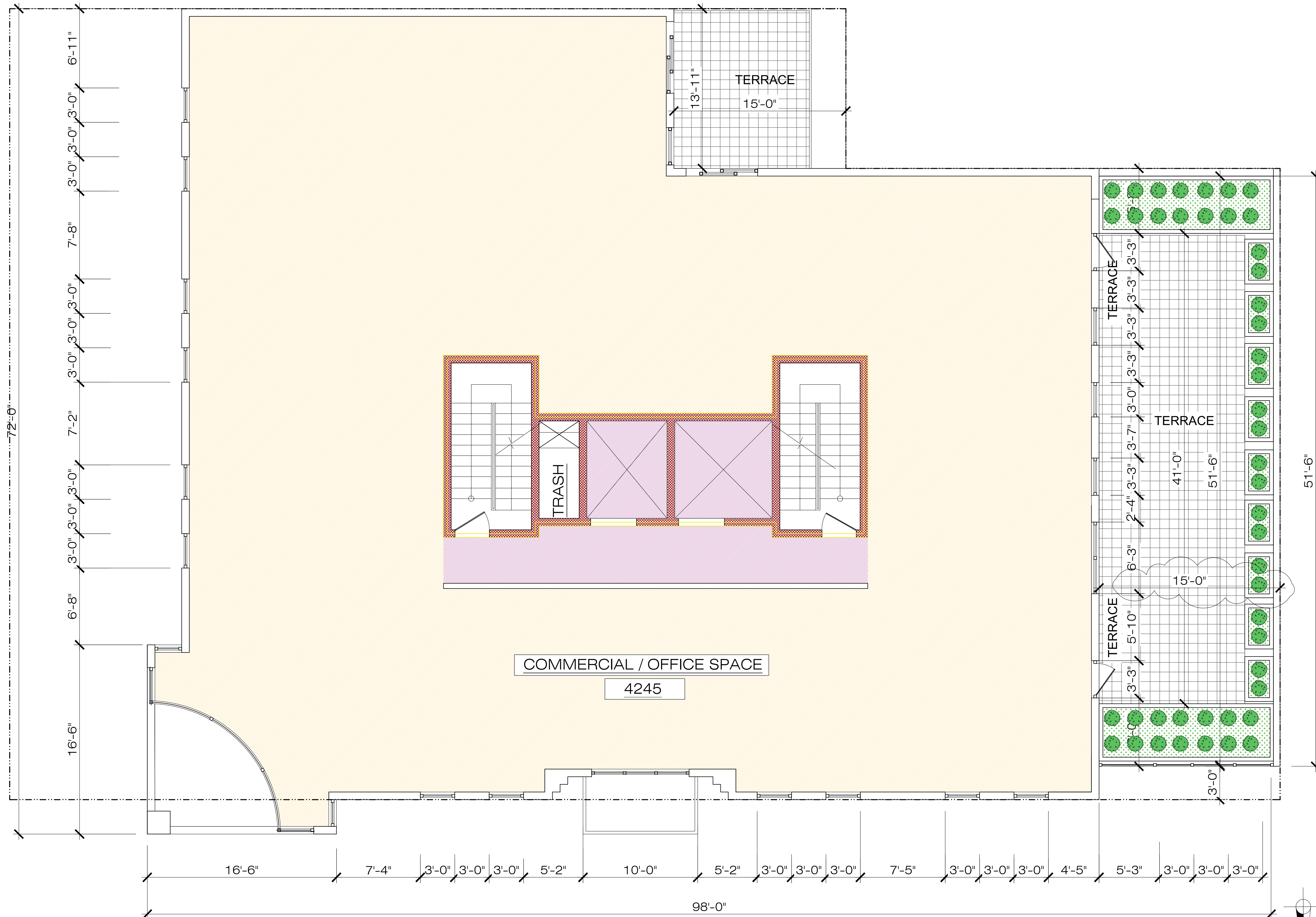


1/8" = 1'-0" SCALE

09.19.2022 ISSUE

A201 DRAWING NUMBER

PROPOSED 2ND  
FLOOR PLAN



RICH MARKUS  
ARCHITECTS  
2601 P STREET NW, 2ND FLR  
WASHINGTON DC 20007  
202.333.2877 V

SOUTH CAPITOL  
STREET SW,  
WASHINGTON D.C.

PROPOSED 2ND  
FLOOR PLAN

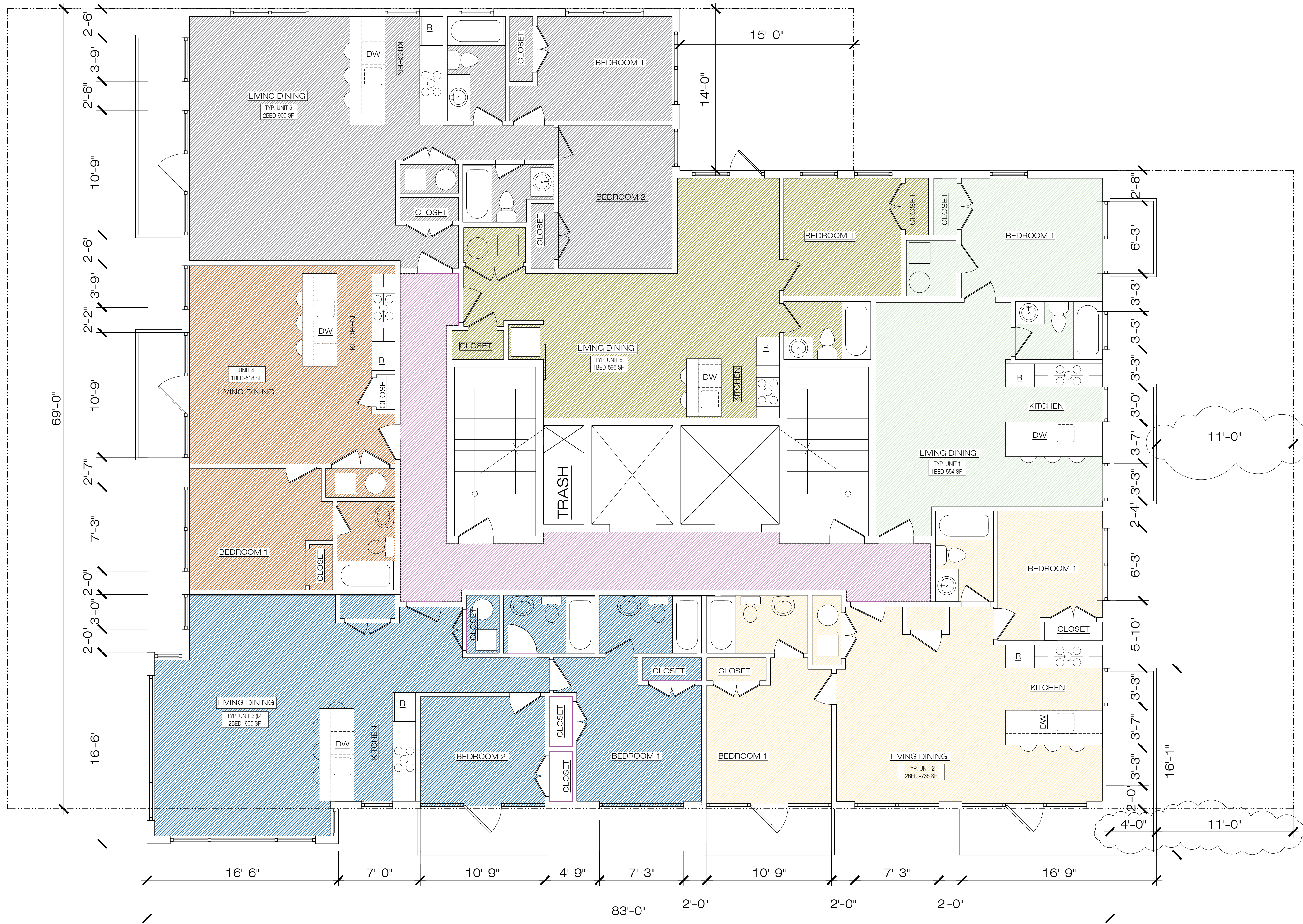
NO.	REVISIONS

1/4" = 1'-0"  
SCALE

09.02.2022  
ISSUE

A202  
DRAWING NUMBER

PROPOSED 3RD FLOOR PLAN



RICH MARKUS  
ARCHITECTS  
2601 P STREET NW, 2ND FLR  
WASHINGTON DC 20007  
202.333.2877 V

SOUTH CAPITOL  
STREET SW,  
WASHINGTON D.C.

PROPOSED  
3RD FLOOR PLAN

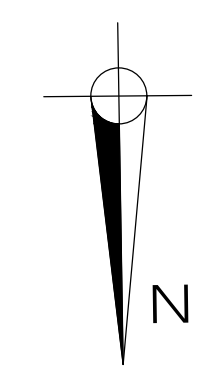
NO.	REVISIONS

--

1/4" = 1'-0"  
SCALE

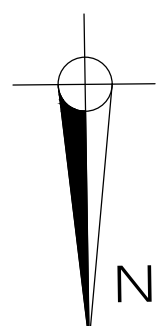
09.02.2022  
ISSUE

A203  
DRAWING NUMBER





PROPOSED 4TH FLOOR PLAN



RICH MARKUS  
ARCHITECTS  
2601 P STREET NW, 2ND FLR  
WASHINGTON DC 20007  
202.333.2877 V

SOUTH CAPITOL  
STREET SW,  
WASHINGTON D.C.

PROPOSED 4TH  
FLOOR PLANS

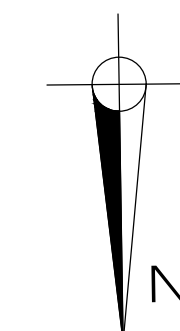
NO.	REVISIONS

1/4" = 1'-0" SCALE

06.13.2022 ISSUE

A204  
DRAWING NUMBER

PROPOSED 5TH FLOOR PLAN



1/4" = 1'-0" SCALE

06.13.2022 ISSUE

A205  
DRAWING NUMBER

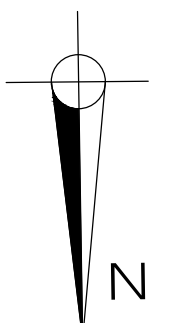
NO.	REVISIONS

PROPOSED 5TH FLOOR PLANS

SOUTH CAPITOL STREET SW, WASHINGTON D.C.

RICH MARKUS ARCHITECTS  
2601 P STREET NW, 2ND FLR WASHINGTON DC 20007  
202.333.2877 V

PROPOSED 6TH FLOOR PLAN



RICH MARKUS  
ARCHITECTS  
2601 P STREET NW, 2ND FLR  
WASHINGTON DC 20007  
202.333.2877 V

SOUTH CAPITOL  
STREET SW,  
WASHINGTON D.C.

PROPOSED 6TH.  
FLOOR PLANS

NO.	REVISIONS

--

1" = 1'-0" SCALE

06.13.2022 ISSUE

A206 DRAWING NUMBER

PROPOSED 7TH FLOOR PLAN



RICH MARKUS  
ARCHITECTS  
2601 P STREET NW, 2ND FLR  
WASHINGTON DC 20007  
202.333.2877 V

SOUTH CAPITOL  
STREET SW,  
WASHINGTON D.C.

PROPOSED 7TH  
FLOOR PLANS

NO.	REVISIONS

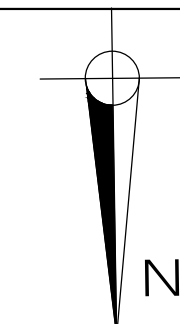
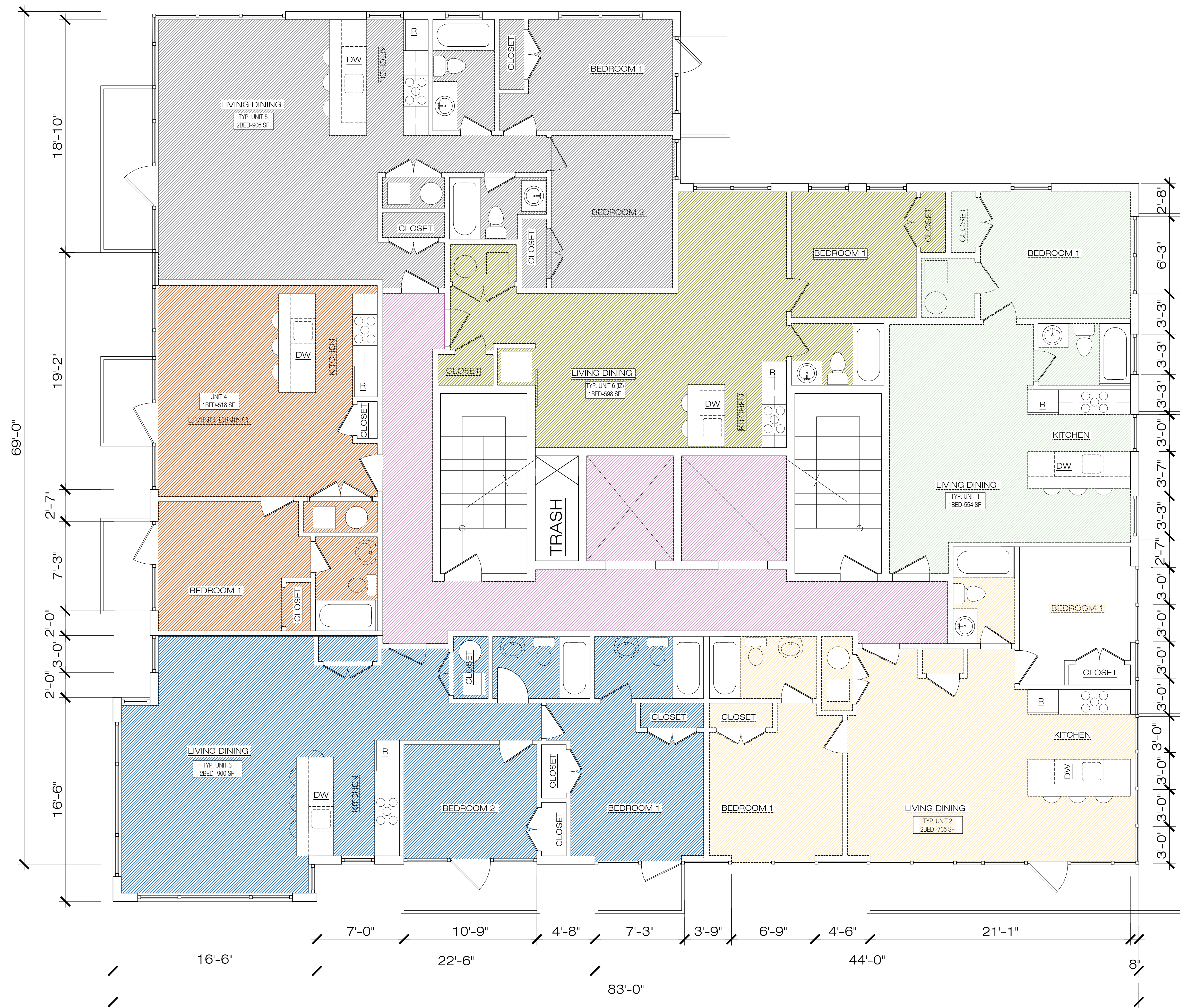
--

1/4" = 1'-0"  
SCALE

06.13.2022  
ISSUE

A207  
DRAWING NUMBER

PROPOSED 8TH FLOOR PLAN



RICH MARKUS  
ARCHITECTS  
2601 P STREET NW, 2ND FLR  
WASHINGTON DC 20007  
202.333.2877 V

SOUTH CAPITOL  
STREET SW,  
WASHINGTON D.C.

PROPOSED 8TH  
FLOOR PLANS

NO.	DESCRIPTION	DATE

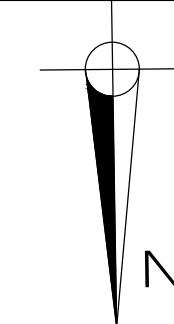
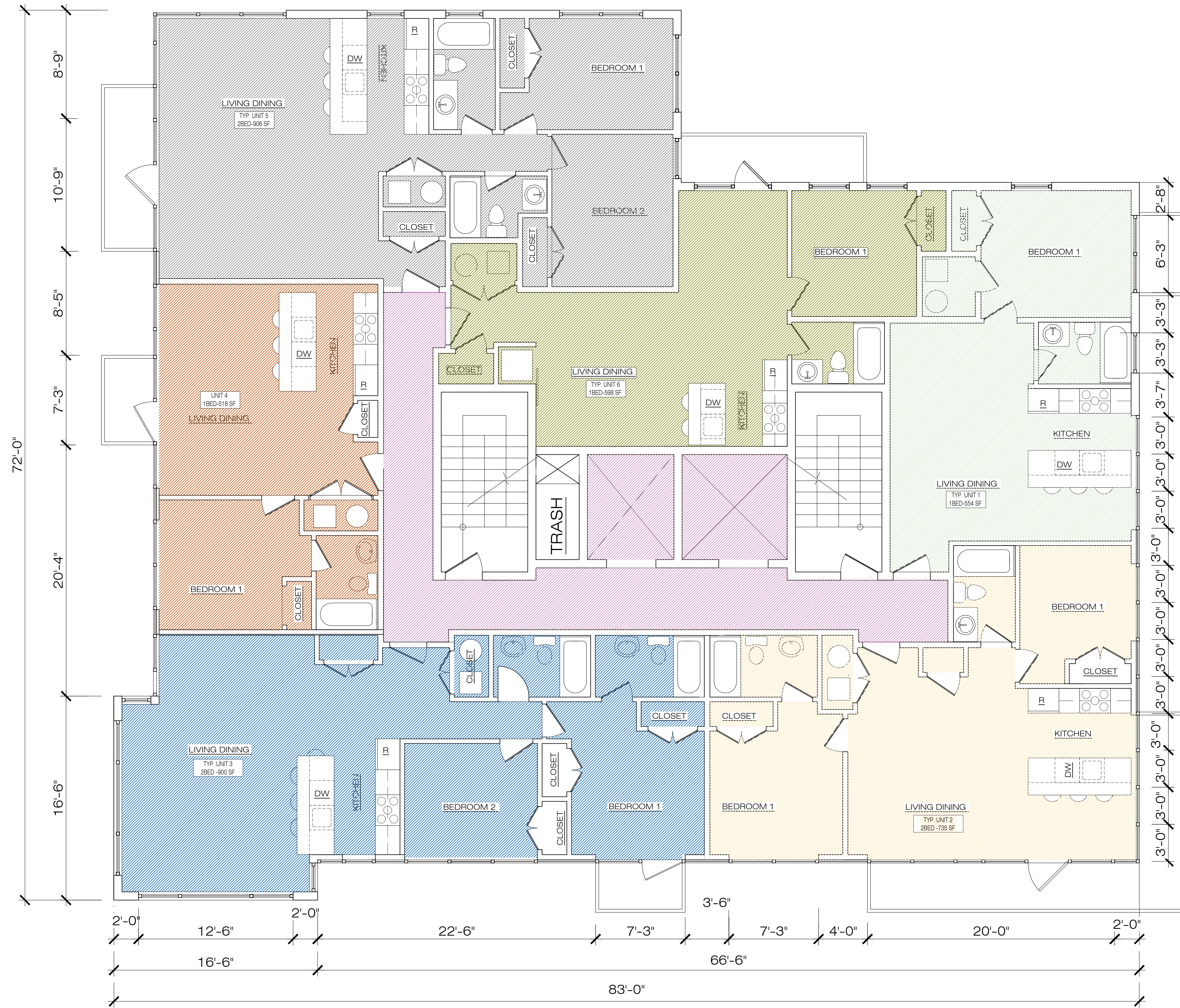
1/4" = 1'-0"  
SCALE

06.13.2022  
ISSUE

A208  
DRAWING NUMBER



PROPOSED 9TH FLOOR PLAN



RICH MARKUS  
ARCHITECTS  
2601 P STREET NW, 2ND FLR  
WASHINGTON DC 20007  
202.333.2877 V

SOUTH CAPITOL  
STREET SW,  
WASHINGTON D.C.

PROPOSED 9TH  
FLOOR PLANS

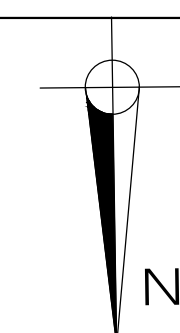
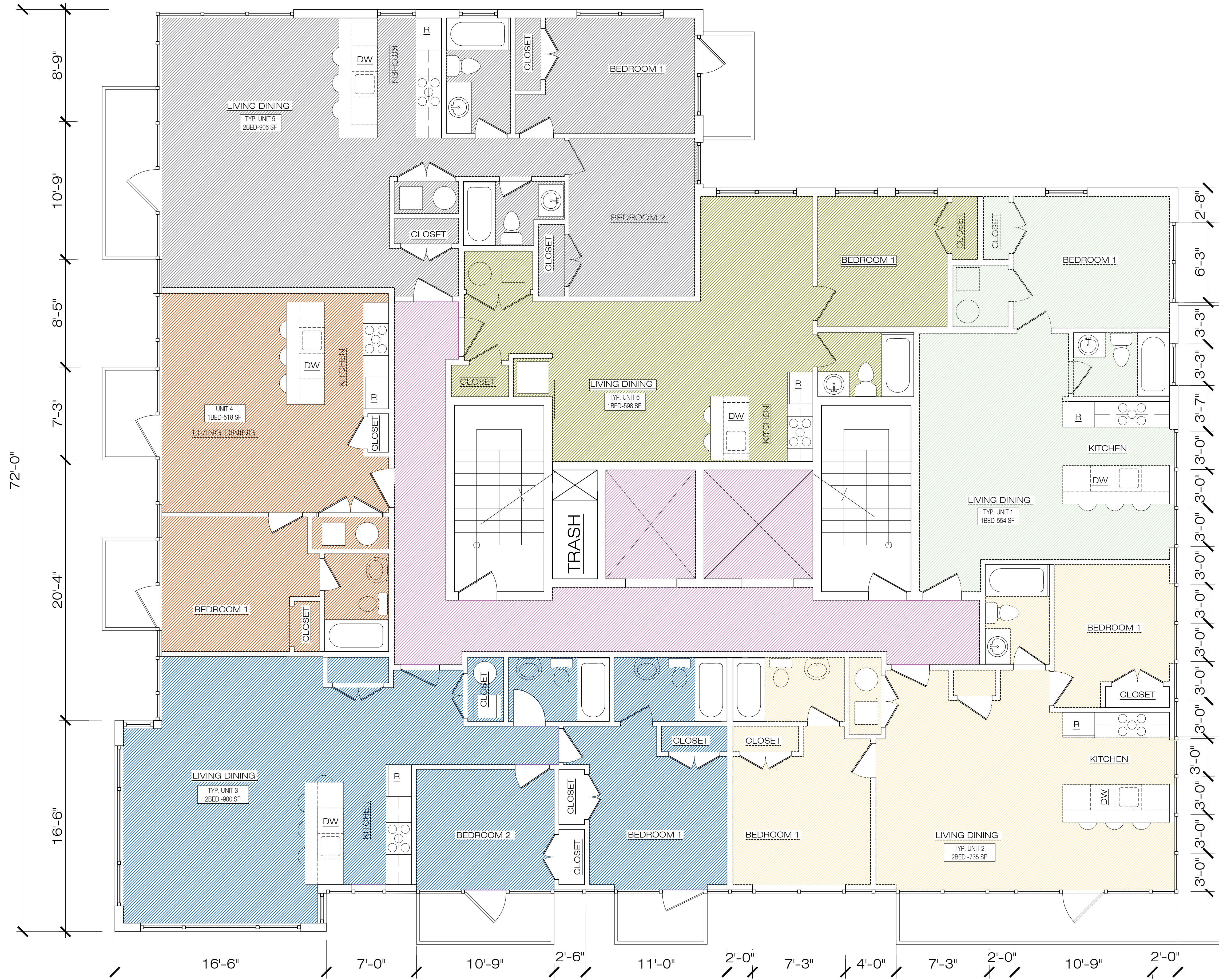
NO.	DESCRIPTION	DATE

1/4" = 1'-0"  
SCALE

06.13.2022  
ISSUE

A209  
DRAWING NUMBER

PROPOSED 10TH FLOOR PLAN



1/4" = 1'-0"  
SCALE

06.13.2022  
ISSUE

A210  
DRAWING NUMBER

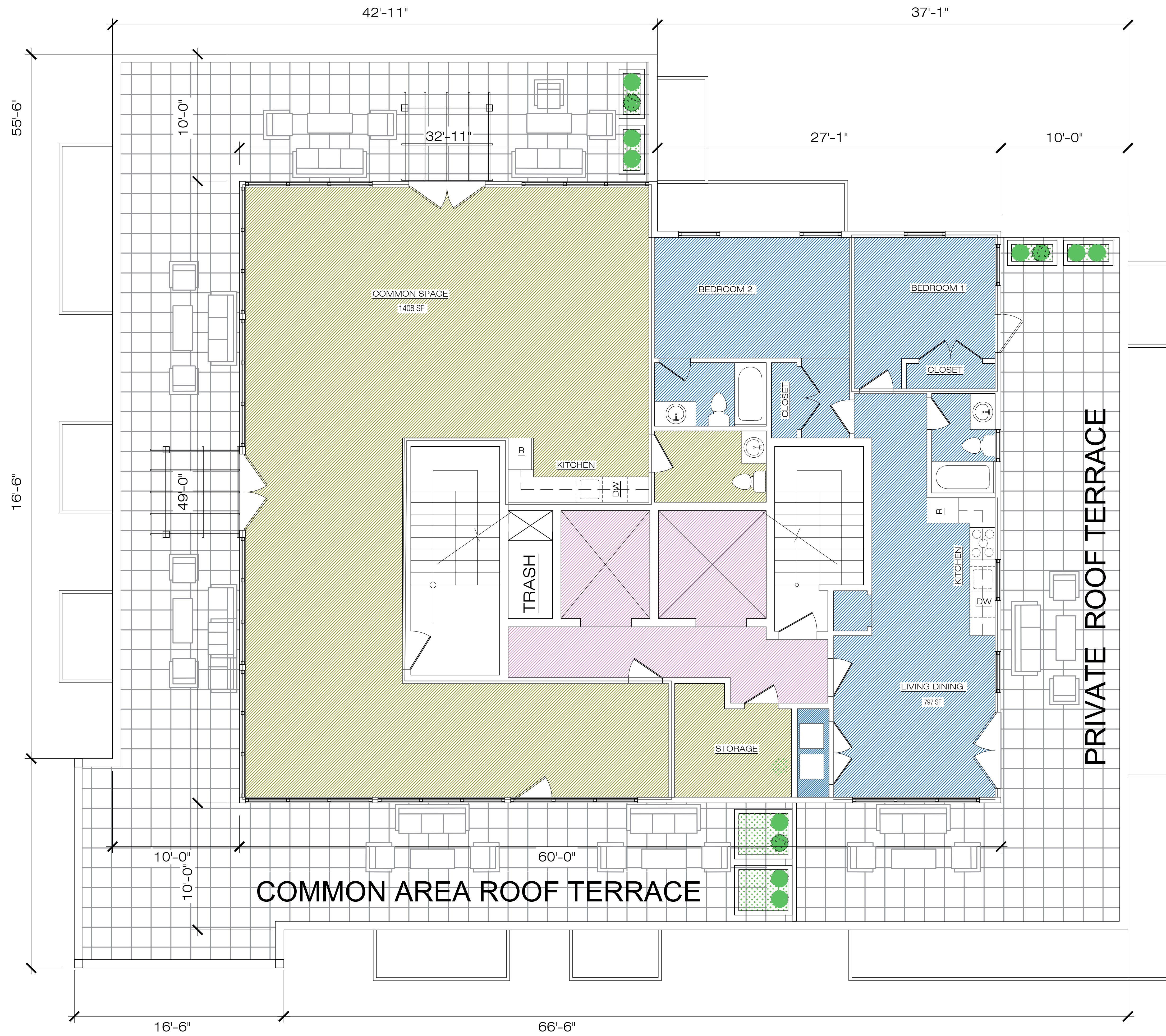
FILE NAME: SOUTH CAPITOL STREET.dwg

PROPOSED 10TH  
FLOOR PLANS

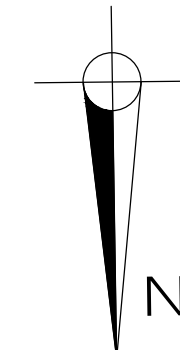
SOUTH CAPITOL  
STREET SW,  
WASHINGTON D.C.

RICH MARKUS  
ARCHITECTS  
2601 P STREET NW, 2ND FLR  
WASHINGTON DC 20007  
202.333.2877 V

NO.	REVISIONS



PROPOSED PENTHOUSE



RICH MARKUS  
ARCHITECTS  
2601 P STREET NW, 2ND FLR  
WASHINGTON DC 20007  
202.333.2877 V

SOUTH CAPITOL  
STREET SW,  
WASHINGTON D.C.

PROPOSED  
PENTHOUSE  
PLAN

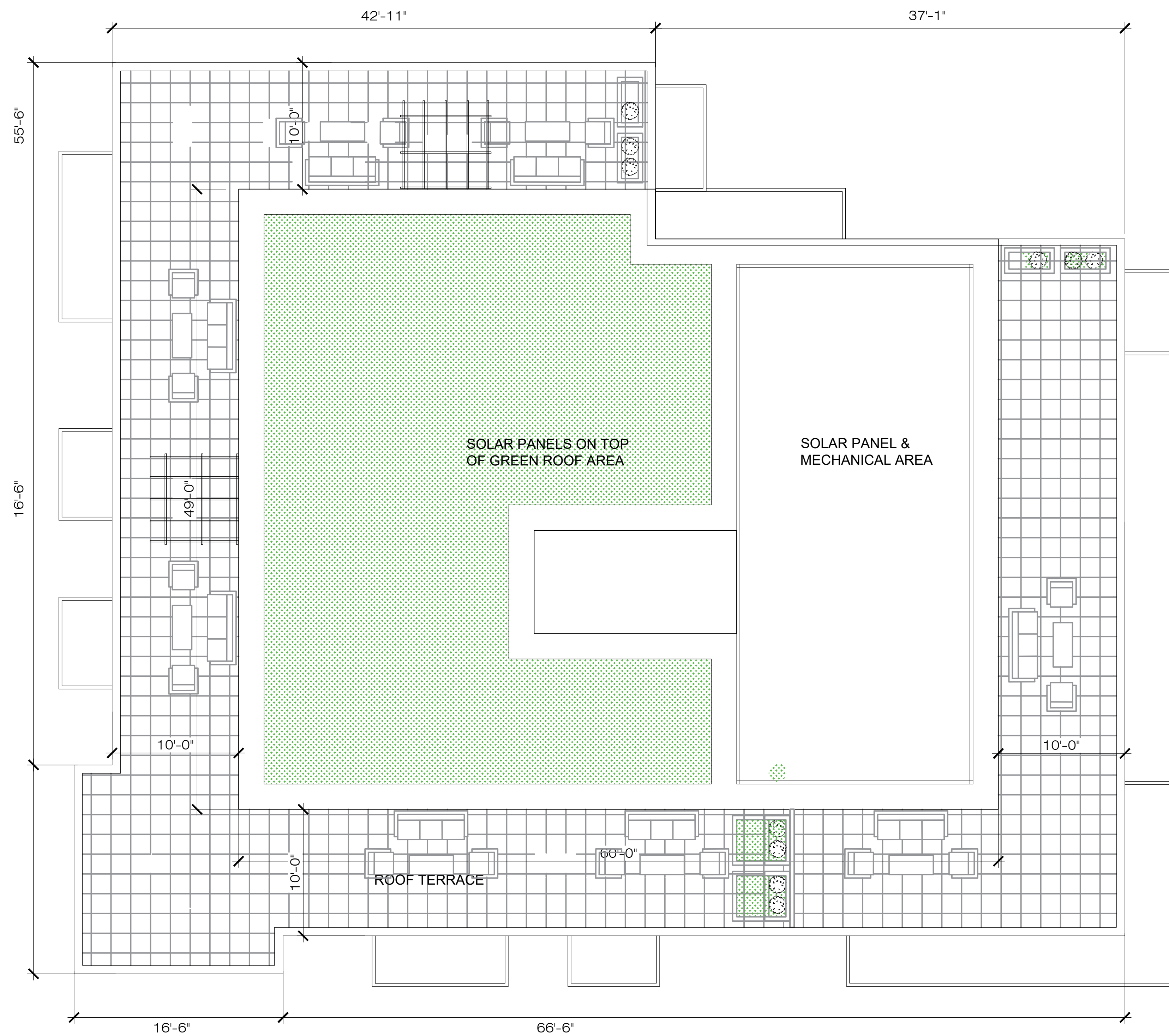
NO.	REVISIONS

--

1/4" = 1'-0"  
SCALE

07.18.2022  
ISSUE

A211  
DRAWING NUMBER



PROPOSED ROOF PLAN

PRELIMINARY SOLAR ENERGY CALCULATION	
ROOF AREA	1,400 sf + 900sf = 2300 sf
ROOF AREA COVERED WITH SOLAR PANELS	80% x 2300 sf = 1,840 sf
SOLAR CAPACITY @ 18 WATTS/sf	1,840 sf x 18 W= 33,120 WATTS OR 33kw
ANNUAL PRODUCTION FOR 33kw SOLAR ARRAY IN WASHINGTON DC WILL AVERAGE 42,000 kwh/yr	
DESCRIPTION	ASSUMPTION
ANNUAL ELECTRICITY GENERATION ESTIMATE	60,000 sf WILL CONSUME 25 kbtu/sf/yr= 440,000 kwh/yr
THEREFORE, THE SOLAR PANELS WOULD BE OFFSETTING JUST UNDER 10% OF TOTAL BUILDING ENERGY USE.	

SOLAR CALCULATION.



GREEN ROOF & SOLAR PANELS



SOLAR PANEL SUPPORT SYS.

RICH MARKUS ARCHITECTS  
2601 P STREET NW, 2ND FLR  
WASHINGTON DC 20007  
202.333.2877 V

SOUTH CAPITOL STREET SW,  
WASHINGTON D.C.

PROPOSED ROOF PLAN

NO.	REVISIONS

AS SHOWN SCALE

09.02.2022 ISSUE

A212

DRAWING NUMBER



A. GREEN ROOF



B. VEGETATED WALL



C. STONE / CONCRETE PAVEMENT

RICH MARKUS  
ARCHITECTS  
2601 P STREET NW, 2ND FLR  
WASHINGTON DC 20007  
202.333.2877 V

SOUTH CAPITOL  
STREET SW,  
WASHINGTON D.C.

GAR

REVISIONS

AS SHOWN

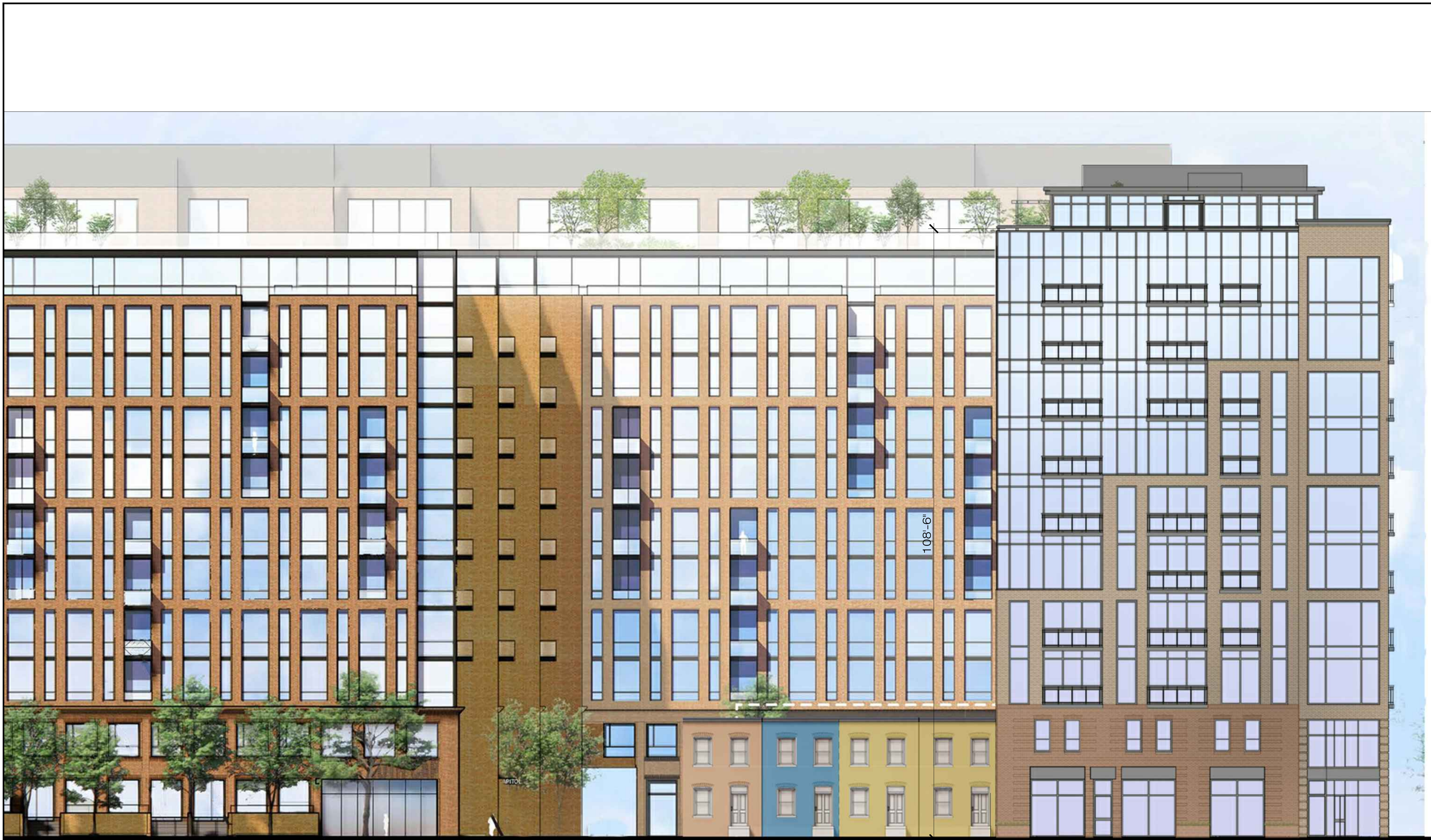
06.13.2022

A213

DRAWING NUMBER

★ ★ ★ Address 5 Capitol St SW		Square	Lot	Zone District
		653	827,829,830	CG-2
Other				
Lot size (enter this value first) *		Lot area (sf)	Minimum Score	Multiglier
		7,079	.3	SCORE: 0.305
Landscape Elements		Square Feet	Factor	Total
<b>A Landscaped areas (select one of the following for each area)</b>				
1	Landscaped areas with a soil depth < 24"	square feet 190	0.30	57.0
2	Landscaped areas with a soil depth ≥ 24"	square feet	0.60	-
3	Bioretention facilities	square feet	0.40	-
<b>B Plantings (credit for plants in landscaped areas from Section A)</b>				
1	Groundcovers, or other plants < 2' height	square feet	0.20	-
2	Plants ≥ 2' height at maturity - calculated at 9-sf per plant	# of plants 15	135 0.30	40.5
3	New trees with less than 40-foot canopy spread - calculated at 50 sq ft per tree	# of trees	0.50	-
4	New trees with 40-foot or greater canopy spread - calculated at 250 sq ft per tree	# of trees	0.60	-
5	Preservation of existing tree 6" to 12" DBH - calculated at 250 sq ft per tree	# of trees	0.70	-
6	Preservation of existing tree 12" to 18" DBH - calculated at 600 sq ft per tree	# of trees	0.70	-
7	Preservation of existing trees 18" to 24" DBH - calculated at 1300 sq ft per tree	# of trees	0.70	-
8	Preservation of existing trees 24" DBH or greater - calculated at 2000 sq ft per tree	# of trees	0.80	-
9	Vegetated wall, plantings on a vertical surface	square feet 140	0.60	84.0
<b>C Vegetated or "green" roofs</b>				
1	Over at least 2" and less than 8" of growth medium	square feet 70	0.60	42.0
2	Over at least 8" of growth medium	square feet 1,762	0.80	1,409.6
<b>D Permeable Paving***</b>				
1	Permeable paving over 6" to 24" of soil or gravel	square feet	0.40	-
2	Permeable paving over at least 24" of soil or gravel	square feet 631	0.50	315.5
<b>E Other</b>				
1	Enhanced tree growth systems***	square feet	0.40	-
2	Renewable energy generation	square feet	0.50	-
3	Approved water features	square feet	0.20	-
				sub-total of sq ft = 2,928
<b>F Bonuses</b>				
1	Native plant species	square feet 2,107	0.10	210.7
2	Landscaping in food cultivation	square feet	0.10	-
3	Harvested stormwater irrigation	square feet	0.10	-
				Green Area Ratio numerator = 2,159
*** Permeable paving and structural soil together may not qualify for more than one third of the Green Area Ratio score.				
Total square footage of all permeable paving and enhanced tree growth.				316

GAR SCORDHEET



RICH MARKUS  
ARCHITECTS  
2601 P STREET NW, 2ND FLR  
WASHINGTON DC 20007  
202.333.2877 V

SOUTH CAPITOL  
STREET SW,  
WASHINGTON D.C.

PROPOSED  
ELEVATION

NO.	REVISIONS

1319

1301

PROPOSED EAST ELEVATION

1/8"=1'-0" SCALE

09.02.2022 ISSUE

A300  
DRAWING NUMBER



PROPOSED NORTH ELEVATION

RICH MARKUS  
ARCHITECTS  
2601 P STREET NW, 2ND FLR  
WASHINGTON DC 20007  
202.333.2877 V

SOUTH CAPITOL  
STREET SW,  
WASHINGTON D.C.

PROPOSED  
ELEVATION

NO.	REVISIONS

1/8" = 1'-0" SCALE

09.02.2022 ISSUE

A301

DRAWING NUMBER



PROPOSED SOUTH ELEVATION

PROPOSED WEST ELEVATION

RICH MARKUS  
ARCHITECTS  
2601 P STREET NW, 2ND FLR  
WASHINGTON DC 20007  
202.333.2877 V

SOUTH CAPITOL  
STREET SW,  
WASHINGTON D.C.

ELEVATIONS

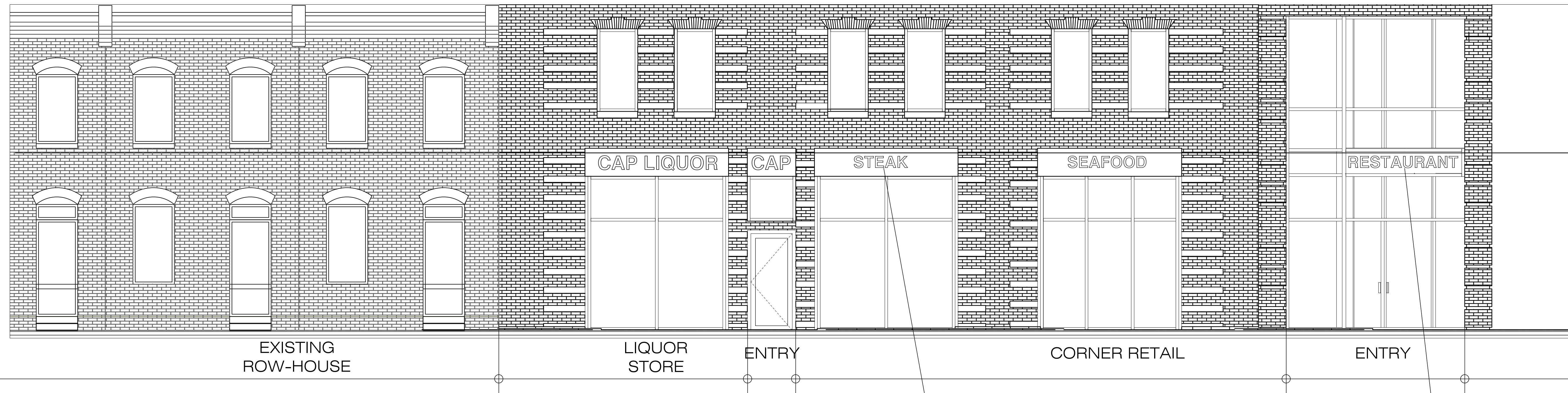
NO.	DESCRIPTION	DATE

1/4" = 1'-0" SCALE

09.02.2022 ISSUE

A302  
DRAWING NUMBER

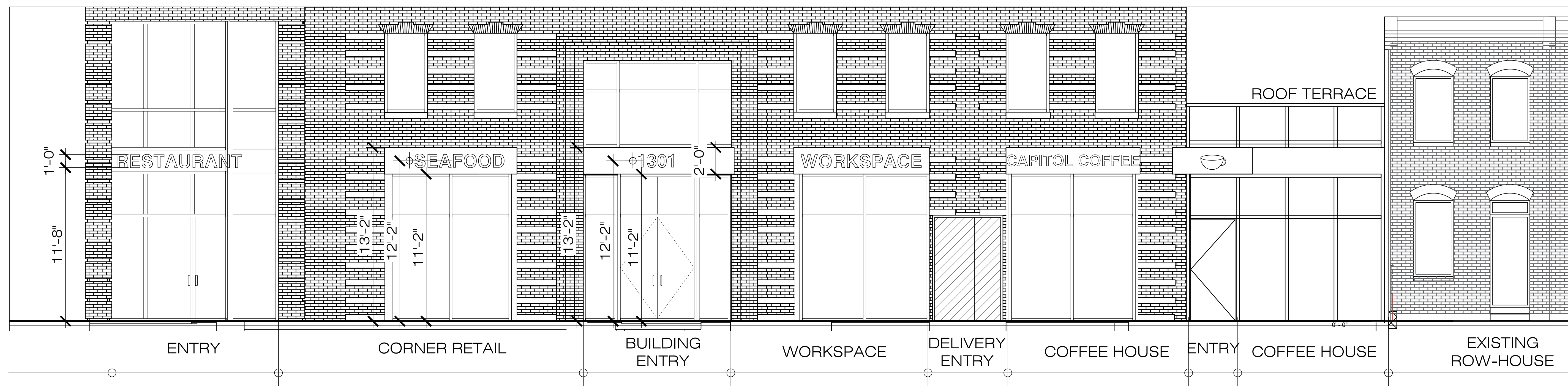




S. CAPITOL ELEVATION

INDIVIDUAL LETTERS HALO-LIT ON SOLID SIGNAGE BAND OVER WINDOW BAYS

INDIVIDUAL LETTERS MOUNTED IN OPEN FRAME



N ST. ELEVATION

RICH MARKUS  
ARCHITECTS  
2601 P STREET NW, 2ND FLR  
WASHINGTON DC 20007  
202.333.2877 V

SOUTH CAPITOL  
STREET SW,  
WASHINGTON D.C.

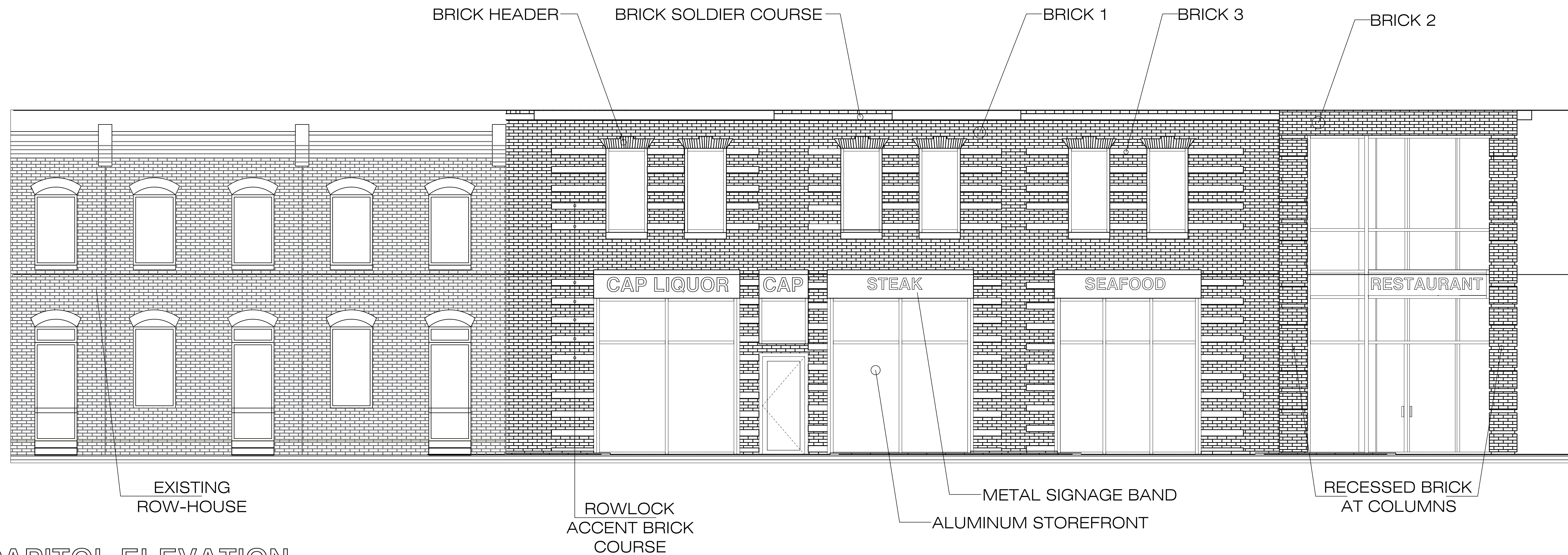
SIGNAGE  
ELEVATION

NO.	DATE	REVISIONS

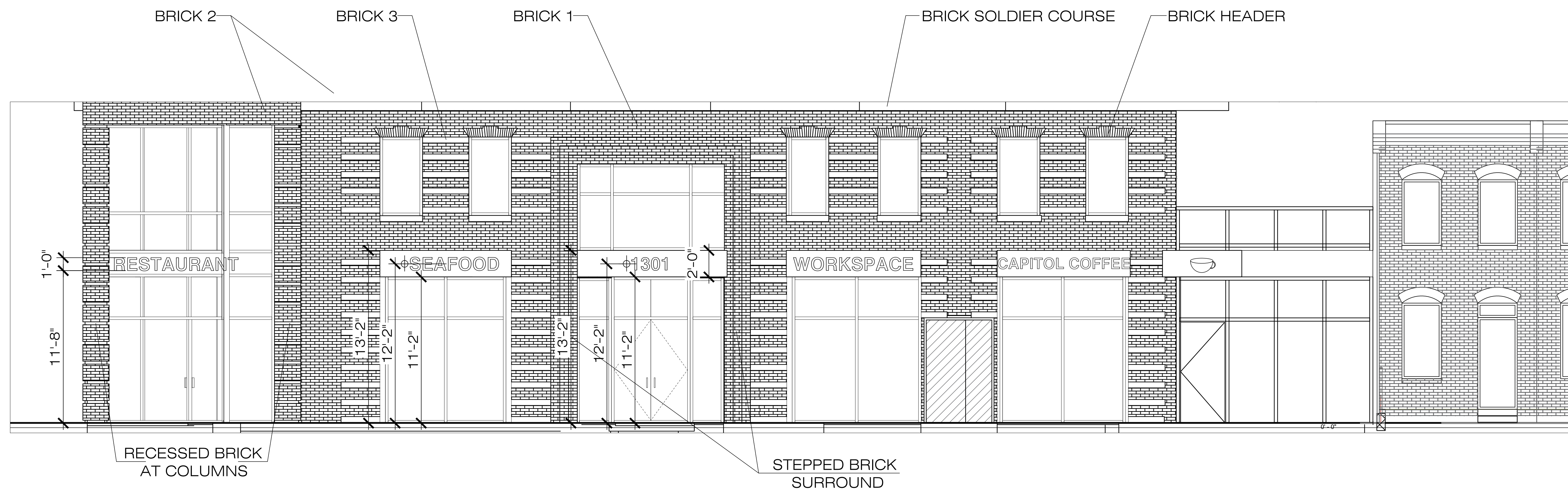
1/4" = 1'-0" SCALE

09.02.2022 ISSUE

A303 DRAWING NUMBER



S. CAPITOL ELEVATION



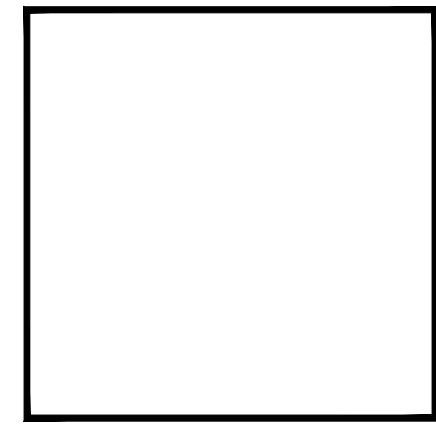
N ST. ELEVATION

RICH MARKUS  
ARCHITECTS  
2601 P STREET NW, 2ND FLR  
WASHINGTON DC 20007  
202.333.2877 V

SOUTH CAPITOL  
STREET SW,  
WASHINGTON D.C.

COMMERCIAL  
FACADE DESIGN

NO.	DESCRIPTION	DATE



1/4" = 1'-0" SCALE  
09.02.2022 ISSUE

A304  
DRAWING NUMBER



S. CAPITOL PARTIAL ELEVATION



N ST. PARTIAL ELEVATION

RICH MARKUS  
ARCHITECTS  
2601 P STREET NW, 2ND FLR  
WASHINGTON DC 20007  
202.333.2877 V

SOUTH CAPITOL  
STREET SW,  
WASHINGTON D.C.

PARTIAL  
ELEVATION

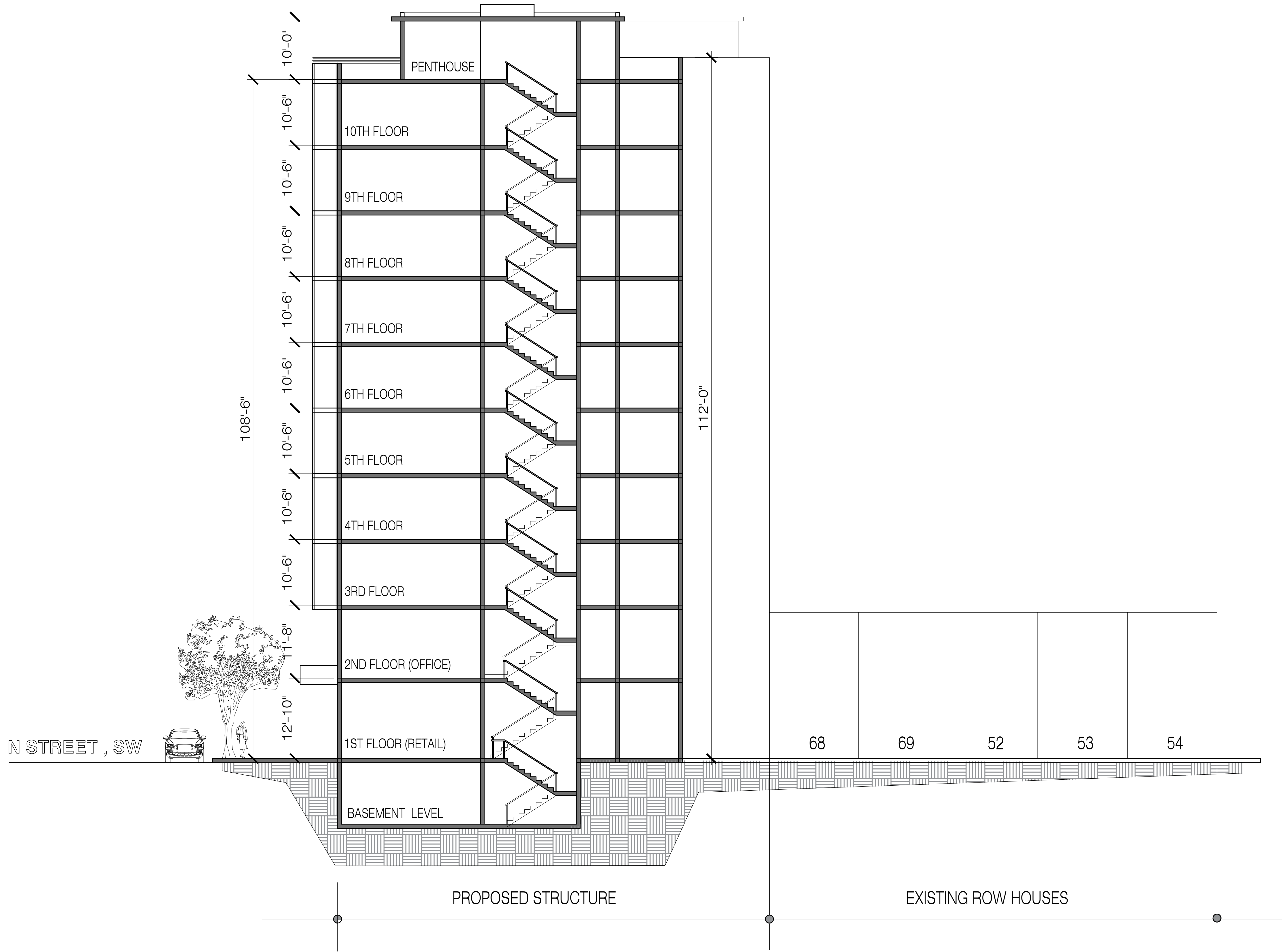
NO.	REVISIONS

1/4" = 1'-0" SCALE

09.02.2022 ISSUE

A305

DRAWING NUMBER



PROPOSED SECTION

RICH MARKUS  
ARCHITECTS

2601 P STREET NW, 2ND FLR  
WASHINGTON DC 20007  
202.333.2877 V

SOUTH CAPITOL  
STREET SW,  
WASHINGTON D.C.

PROPOSED  
SECTION

NO.	DATE	REVISIONS

1" = 1'-0" SCALE

06.13.2022 ISSUE

A400

DRAWING NUMBER